



Pressure Washers

www.HotsyAB.com



WATER BLAST MANUFACTURING LP

EDMONTON, AB

16712 - 118 Ave.
Edmonton, AB
Phone: 780-451-4521
Toll Free: 800-328-1555

CALGARY, AB

3611 - 60 Ave. SE
Calgary, AB
Phone: 403-717-4280
Toll Free: 800-717-8101

RED DEER, AB

#8, 7419 - 50th (Gaetz) Ave.
Red Deer, AB
Phone: 403-309-2271
Toll Free: 877-468-7973

LETHBRIDGE, AB

Bay 1, 4002 - 9 Ave. N
Lethbridge, AB
Phone: 403-381-3318
Toll Free: 877-303-3394

GRANDE PRAIRIE, AB

Unit 109, 10101-118 St
Grande Prairie, AB
Phone: 780-538-2556
Toll Free: 800-320-8848

LANGLEY, BC

#112 - 20575 Langley By-Pass
Langley, BC
Phone: 604-532-7002
Toll Free: 888-532-7021

ESTEVAN, SK

1112 - 5th Street
Estevan, SK
Phone: 306-634-8727
Toll Free: 855-634-8727

BISMARCK, ND

2805 Morrison Ave., Suite C
Bismarck, ND
Phone: 701-222-3941
Toll Free: 800-279-0172

WILLISTON, ND

406 - 8th Avenue E.
Williston, ND
Phone: 701-609-5494
Toll Free: 877-803-3913



Pressure Washers

www.HotsyAB.com

Scheduled Maintenance Inspections Save You Money. Ask Us How!



Why Schedule Maintenance Inspections?

Expensive Repairs

Most pressure washers and steam cleaners are operated and not checked or repaired unless they break down.

Safety Concerns

Units are operated with marginal hoses, safety valves and pressure unloaders that often are not working properly, which could cause safety hazards.

Increased Costs

Your machine will slowly decrease in pressure during regular operation due to the coil being clogged with lime, the unloader sticking and/or poor pump packings.

Note:

If your coil plugs with lime, it will have to be replaced. Replacement costs range from \$1,000 to \$5,000.

Protect Your Investment

Regular maintenance inspections ensure your equipment is in optimum condition, increasing the longevity of your machine.

Terms

This is not a contract, it is an agreement. It can be canceled at anytime by either party, without penalty.

What We Will Do For You

Your machine is checked and tested with a pressure gauge to ensure all systems are working satisfactory.

Our experienced mechanics will perform a 50-point check and recommend any repairs that are needed.

Most repairs can be performed immediately, ensuring your equipment is in peak running condition.

EDMONTON, AB

16712 - 118 Ave.
Edmonton, AB

Phone: 780-451-4521

Toll Free: 800-328-1555

CALGARY, AB

3611 - 60 Ave. SE
Calgary, AB

Phone: 403-717-4280

Toll Free: 800-717-8101

RED DEER, AB

#8, 7419 - 50th (Gaetz) Ave.
Red Deer, AB

Phone: 403-309-2271

Toll Free: 877-468-7973

LETHBRIDGE, AB

Bay 1, 4002 - 9 Ave. N
Lethbridge, AB

Phone: 403-381-3318

Toll Free: 877-303-3394

GRANDE PRAIRIE, AB

Unit 109, 10101-118 St.
Grande Prairie, AB

Phone: 780-538-2556

Toll Free: 800-320-8848

LANGLEY, BC

#112 - 20575 Langley By-Pass
Langley, BC

Phone: 604-532-7002

Toll Free: 888-532-7021

ESTEVAN, SK

1112 - 5th Street
Estevan, SK

Phone: 306-634-8727

Toll Free: 855-634-8727

BISMARCK, ND

2805 Morrison Ave., Suite C
Bismarck, ND

Phone: 701-222-3941

Toll Free: 800-279-0172

WILLISTON, ND

406 - 8th Avenue E.
Williston, ND

Phone: 701-609-5494

Toll Free: 877-803-3913



Pressure Washers

www.HotsyAB.com

Scheduled Maintenance Inspections Save You Money. Ask Us How!

Scheduled Maintenance Inspections

We Guarantee a 50-point Inspection with Every Call!

Included with each Inspection:

- Change Pump Oil
- Tighten Belts
- Remove and Replace Micro Switch
- Remove and Replace Standard Spray Nozzle

Pump <input type="checkbox"/> Oil Leaks <input type="checkbox"/> Oil Level <input type="checkbox"/> Unloader <input type="checkbox"/> Relief Valve <input type="checkbox"/> Valves & Seals <input type="checkbox"/> Suction Screen <input type="checkbox"/> Filter <input type="checkbox"/> Hose <input type="checkbox"/> Clamp <input type="checkbox"/> Belt <input type="checkbox"/> Alignment	Coil <input type="checkbox"/> Scale <input type="checkbox"/> Soot <input type="checkbox"/> Leaks Engine <input type="checkbox"/> Oil Level <input type="checkbox"/> Oil Filter <input type="checkbox"/> Fuel Filter <input type="checkbox"/> Air Filter <input type="checkbox"/> Leaks <input type="checkbox"/> Fuel Tank <input type="checkbox"/> Fuse <input type="checkbox"/> Spark Plugs <input type="checkbox"/> Battery	Burner Assembly <input type="checkbox"/> Burner Nozzle <input type="checkbox"/> Electrodes <input type="checkbox"/> Transformer <input type="checkbox"/> Fuel Pressure <input type="checkbox"/> Clean & Check Fuel Filter Electrical <input type="checkbox"/> GFI <input type="checkbox"/> Amp Draw <input type="checkbox"/> Pressure Switch <input type="checkbox"/> Flow Switch <input type="checkbox"/> Thermostat <input type="checkbox"/> Remote Shut	Natural Gas <input type="checkbox"/> Gas Valve Operation <input type="checkbox"/> Clean Burning <input type="checkbox"/> Ignition Leaks or Damage <input type="checkbox"/> Guns <input type="checkbox"/> Hose <input type="checkbox"/> Quick Coupler <input type="checkbox"/> Reel <input type="checkbox"/> Nozzle <input type="checkbox"/> Soap Feed <input type="checkbox"/> Solenoid <input type="checkbox"/> Hydrominder <input type="checkbox"/> Water Softener		
Pump Pressure _____		Fuel Pressure _____		Steam Temperature _____	

EDMONTON, AB 16712 - 118 Ave. Edmonton, AB Phone: 780-451-4521 Toll Free: 800-328-1555	CALGARY, AB 3611 - 60 Ave. SE Calgary, AB Phone: 403-717-4280 Toll Free: 800-717-8101	RED DEER, AB #8, 7419 - 50th (Gaetz) Ave. Red Deer, AB Phone: 403-309-2271 Toll Free: 877-468-7973	LETHBRIDGE, AB Bay 1, 4002 - 9 Ave. N Lethbridge, AB Phone: 403-381-3318 Toll Free: 877-303-3394	GRANDE PRAIRIE, AB Unit 109, 10101-118 St Grande Prairie, AB Phone: 780-538-2556 Toll Free: 800-320-8848	LANGLEY, BC #112 - 20575 Langley By-Pass Langley, BC Phone: 604-532-7002 Toll Free: 888-532-7021	ESTEVAN, SK 1112 - 5th Street Estevan, SK Phone: 306-634-8727 Toll Free: 855-634-8727	BISMARCK, ND 2805 Morrison Ave., Suite C Bismarck, ND Phone: 701-222-3941 Toll Free: 800-279-0172	WILLISTON, ND 406 - 8th Avenue E. Williston, ND Phone: 701-609-5494 Toll Free: 877-803-3913
---	--	---	---	---	---	--	--	--



Pressure Washers

www.HotsyAB.com

MODEL

Model	GPM	PSI	Engine	CC's	Burner	BTU/HR	Pump Model	Drive	Hose
1065SSE	3.5	3000	Honda	337	Diesel	309,900	HS3540G.3	Direct	100'
1075BE	4.0	3500	Honda	389	Diesel	385,800	HM4035L.2	Belt	100'

10' TRAILER

- Single axle, 3500 lb rating
- Spruce 2"x6" decking
- Swing away tongue jack, 2" coupler 5000 lb rating
- 3500 lb GVW
- HD Hose Reel, Steel Construction, 3500 PSI, 200' Capacity
- Electric Breaks
- Stake Pockets and Rub Rail
- Flush Mount Marker and Tail Lights

WATER TANK

- Heavy-Duty One-Piece Seamless Polyethylene
- Won't Crack, Rust or Corrode
- LT220
 - 220-gallon capacity
 - 31" wide x 58" long x 39" high

OPTIONS

- Anti Freeze Tank



EDMONTON, AB

16712 - 118 Ave.
Edmonton, AB
Phone: 780-451-4521
Toll Free: 800-328-1555

CALGARY, AB

36111 - 60 Ave. SE
Calgary, AB
Phone: 403-717-4280
Toll Free: 800-717-8101

RED DEER, AB

#8, 7419 - 50th (Gaetz) Ave.
Red Deer, AB
Phone: 403-309-2271
Toll Free: 877-468-7973

LETHBRIDGE, AB

Bay 1, 4002 - 9 Ave. N
Lethbridge, AB
Phone: 403-381-3318
Toll Free: 877-303-3394

GRANDE PRAIRIE, AB

Unit 109, 10101-118 St
Grande Prairie, AB
Phone: 780-538-2556
Toll Free: 800-320-8848

LANGLEY, BC

#112 - 20575 Langley By-Pass
Langley, BC
Phone: 604-532-7002
Toll Free: 888-532-7021

ESTEVAN, SK

1112 - 5th Street
Estevan, SK
Phone: 306-634-8727
Toll Free: 855-634-8727

BISMARCK, ND

2805 Morrison Ave., Suite C
Bismarck, ND
Phone: 701-222-3941
Toll Free: 800-279-0172

WILLISTON, ND

406 - 8th Avenue E.
Williston, ND
Phone: 701-609-5494
Toll Free: 877-803-3913



Pressure Washers

www.HotsyAB.com



MODELS

Model	GPM	PSI	Engine*	CC's	Burner	BTU/HR	Pump Model	Drive	Hose
1260SS	4.5	3000	Briggs Van 18	570	12V DC	385,800	HM4035R.3	Belt	150'-3/8"
1270SS	4.5	4000	Honda	688	12V DC	385,800	HX5843R.2	Belt	150'-3/8"
HSS-503069E	5.0	3000	Kubota Z602-E4B	599	12V DC	429,000	HX5843R.2	Belt	150'-3/8"
HSS-653569E	6.5	3500	Kubota D1105-E4B	1123	12V DC	557,000	HX8043R.2	Belt	150'-3/8"
HSS-803069E	8.0	3000	Kubota D1105-E4B	1123	12V DC	772,000	HX9536.2	Belt	150'-1/2"
HSS-952569E	9.5	2500	Kubota D1105-E4B	1123	12V DC	857,000	HX1036R.2	Belt	150'-1/2"

* Vanguard: Gas-Powered Engine * Honda: Gas-Powered Engine * Kubota: Diesel-Powered Engine

16' TRAILER

- Tandem axle, 3500 lb. rating
- Spruce 2"x6" decking
- Tongue jack, 2-5/16" coupler
- 7000 lbs. GVW
- Electric brakes
- HD Hose Reel, Steel Construction, 3500 PSI, 200' Capacity

WATER TANK

- Heavy-Duty One-Piece Seamless Polyethylene
- Won't Crack, Rust or Corrode
- LT500 • 500-gallon • 49" diameter x 83" long
- LT600 • 600-gallon • 44" wide x 73" long x 60" high
- LT630 • 630-gallon • 48" wide x 71" long x 60" high

OPTIONS

- Steam Kit, 150' 3/8" Hose, Hose Reel, Wand
- Dry Steam Kit, 100' 3/4" Hose, Hose Hanger, Wand
- Anti Freeze Tank



EDMONTON, AB

16712 - 118 Ave.
Edmonton, AB
Phone: 780-451-4521
Toll Free: 800-328-1555

CALGARY, AB

3611 - 60 Ave. SE
Calgary, AB
Phone: 403-717-4280
Toll Free: 800-717-8101

RED DEER, AB

#8, 7419 - 50th (Gaetz) Ave.
Red Deer, AB
Phone: 403-309-2271
Toll Free: 877-468-7973

LETHBRIDGE, AB

Bay 1, 4002 - 9 Ave. N
Lethbridge, AB
Phone: 403-381-3318
Toll Free: 877-303-3394

GRANDE PRAIRIE, AB

Unit 109, 10101-118 St
Grande Prairie, AB
Phone: 780-538-2556
Toll Free: 800-320-8848

LANGLEY, BC

#112 - 20575 Langley By-Pass
Langley, BC
Phone: 604-532-7002
Toll Free: 888-532-7021

ESTEVAN, SK

1112 - 5th Street
Estevan, SK
Phone: 306-634-8727
Toll Free: 855-634-8727

BISMARCK, ND

2805 Morrison Ave., Suite C
Bismarck, ND
Phone: 701-222-3941
Toll Free: 800-279-0172

WILLISTON, ND

406 - 8th Avenue E.
Williston, ND
Phone: 701-609-5494
Toll Free: 877-803-3913



Pressure Washers

www.HotsyAB.com



MODELS

Model	GPM	PSI	Engine	CC's (HP)	Burner	BTU/HR	Pump Model	Drive	Hose
1260SS	4.5	3000	Vanguard	570 (16)	12V DC	385,800	HM4035R.3	Belt	150'-3/8"
1270SS	4.5	4000	Honda	688 (20)	12V DC	385,800	HX5843R.2	Belt	150'-3/8"
5645*	6.0	3000	Honda	670 (24)	120V AC	740,000	HHC800.1	Belt	150'-3/8"

*Models include a 2000W Generator

16' TRAILER

- 16' Enclosed Side Door
- Rear Barn Doors
- 12,000 GVW Tandem 6,000 lb. axles
- 2-5/16" Ball Hitch
- Undercarriage insulated with 1-1/2" Urethane Foam
- Interior insulated and covered in white metal cladding
- Electric Brakes
- Steam Kit, 150' 3/8" Hose & Wand
- HD Hose Reel, Steel Construction, 3500 PSI, 200' Capacity
- Anti Freeze Tank

WATER TANK

- Heavy-Duty One-Piece Seamless Polyethylene
- Won't Crack, Rust or Corrode
- LT600 • 600-gallon • 44" wide x 73" long x 60" high

OPTIONS

- Dry Steam Kit, 100' 3/4" Hose, Hose Hanger, Wand
- Electric Heater, 1500 Watt, 115 Volt



EDMONTON, AB

16712 - 118 Ave.
Edmonton, AB
Phone: 780-451-4521
Toll Free: 800-328-1555

CALGARY, AB

3611 - 60 Ave. SE
Calgary, AB
Phone: 403-717-4280
Toll Free: 800-717-8101

RED DEER, AB

#8, 7419 - 50th (Gaetz) Ave.
Red Deer, AB
Phone: 403-309-2271
Toll Free: 877-468-7973

LETHBRIDGE, AB

Bay 1, 4002 - 9 Ave. N
Lethbridge, AB
Phone: 403-381-3318
Toll Free: 877-303-3394

GRANDE PRAIRIE, AB

Unit 109, 10101-118 St.
Grande Prairie, AB
Phone: 780-538-2556
Toll Free: 800-320-8848

LANGLEY, BC

#112 - 20575 Langley By-Pass
Langley, BC
Phone: 604-532-7002
Toll Free: 888-532-7021

ESTEVAN, SK

1112 - 5th Street
Estevan, SK
Phone: 306-634-8727
Toll Free: 855-634-8727

BISMARCK, ND

2805 Morrison Ave., Suite C
Bismarck, ND
Phone: 701-222-3941
Toll Free: 800-279-0172

WILLISTON, ND

406 - 8th Avenue E.
Williston, ND
Phone: 701-609-5494
Toll Free: 877-803-3913



Pressure Washers

www.HotsyAB.com



MODELS

Model	GPM	PSI	Engine	HP	Burner	BTU/HR	Pump Model	Drive	Hose
WB3007SDH	7.0	3000	Isuzu	25HP	120V AV	700,000	Hotsy	Belt	150'-3/8"
1260SSD	4.5	3000	Yanmar	19HP	12V	386,000	Hotsy	Belt	150'-3/8"

16' TRAILER

- 16' Enclosed Side Door
- Rear Barn Doors
- 12,000 GVW Tandem 6,000 lb. axles
- 2-5/16" Ball Hitch
- Undercarriage insulated 1-1/2" Urethane Foam
- Interior insulated and covered in white metal cladding
- Electric Brakes
- Steam Kit, 150' 3/8" Hose & Wand
- HD Hose Reel, Steel Construction, 3500 PSI, 200' Capacity
- Anti Freeze Tank

WATER TANK

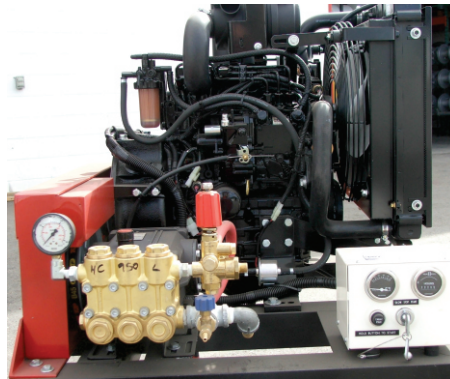
- Heavy-Duty One-Piece Seamless Polyethylene
- Won't Crack, Rust or Corrode
- LT600 • 600-gallon • 44" wide x 73" long x 60" high

OPTIONS

- Dry Steam Kit, 100' 3/4" Hose, Hose Hanger, Wand
- Electric Heater, 1500 Watt, 115 Volt



1260SSD



WB3007SDH

EDMONTON, AB

16712 - 118 Ave.
Edmonton, AB
Phone: 780-451-4521
Toll Free: 800-328-1555

CALGARY, AB

3611 - 60 Ave. SE
Calgary, AB
Phone: 403-717-4280
Toll Free: 800-717-8101

RED DEER, AB

#8, 7419 - 50th (Gaetz) Ave.
Red Deer, AB
Phone: 403-309-2271
Toll Free: 877-468-7973

LETHBRIDGE, AB

Bay 1, 4002 - 9 Ave. N
Lethbridge, AB
Phone: 403-381-3318
Toll Free: 877-303-3394

GRANDE PRAIRIE, AB

Unit 109, 10101-118 St.
Grande Prairie, AB
Phone: 780-538-2556
Toll Free: 800-320-8848

LANGLEY, BC

#112 - 20575 Langley By-Pass
Langley, BC
Phone: 604-532-7002
Toll Free: 888-532-7021

ESTEVAN, SK

1112 - 5th Street
Estevan, SK
Phone: 306-634-8727
Toll Free: 855-634-8727

BISMARCK, ND

2805 Morrison Ave., Suite C
Bismarck, ND
Phone: 701-222-3941
Toll Free: 800-279-0172

WILLISTON, ND

406 - 8th Avenue E.
Williston, ND
Phone: 701-609-5494
Toll Free: 877-803-3913



Pressure Washers

www.HotsyAB.com

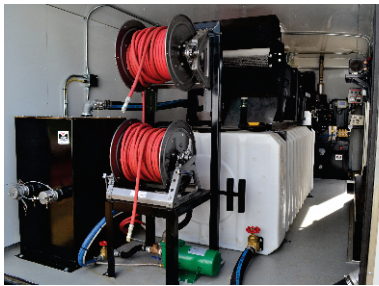


MODELS

Model	GPM	PSI	Engine	HP	Burner	BTU/HR	Pump Model	Drive	Hose
WB3004HYD	4	3000	Yanmar	36HP	120V AV	980,000	HHC506R.2	Hydraulic	2X150'-3/8"

16' TRAILER

- 16 Ft Enclosed Trailer with Side Man Door
- Rear Barn Doors
- 12,000 GVW Tandem 6,000 lb. axles
- 2-5/16" Ball Hitch
- Undercarriage insulated 1-1/2" Urethane Foam
- Interior insulated and covered in white metal cladding
- Electric Brakes
- HD Hose Reel, Steel Construction, 2 X 200' Capacity
- Anti Freeze Tank
- Light Package



VACUUM



HEATER/PUMPING MODULE

WATER TANK

- Heavy-Duty One-Piece Seamless Polyethylene
- Won't Crack, Rust or Corrode
- VS400 • 400-gallon • 43" wide x 80" long x 32.5" high

OPTIONS

- Electric Heater, 1500 Watt, 115 Volt

EDMONTON, AB

16712 - 118 Ave.
Edmonton, AB
Phone: 780-451-4521
Toll Free: 800-328-1555

CALGARY, AB

3611 - 60 Ave. SE
Calgary, AB
Phone: 403-717-4280
Toll Free: 800-717-8101

RED DEER, AB

#8, 7419 - 50th (Gaetz) Ave.
Red Deer, AB
Phone: 403-309-2271
Toll Free: 877-468-7973

LETHBRIDGE, AB

Bay 1, 4002 - 9 Ave. N
Lethbridge, AB
Phone: 403-381-3318
Toll Free: 877-303-3394

GRANDE PRAIRIE, AB

Unit 109, 10101-118 St.
Grande Prairie, AB
Phone: 780-538-2556
Toll Free: 800-320-8848

LANGLEY, BC

#112 - 20575 Langley By-Pass
Langley, BC
Phone: 604-532-7002
Toll Free: 888-532-7021

ESTEVAN, SK

1112 - 5th Street
Estevan, SK
Phone: 306-634-8727
Toll Free: 855-634-8727

BISMARCK, ND

2805 Morrison Ave., Suite C
Bismarck, ND
Phone: 701-222-3941
Toll Free: 800-279-0172

WILLISTON, ND

406 - 8th Avenue E.
Williston, ND
Phone: 701-609-5494
Toll Free: 877-803-3913



Pressure Washers

www.HotsyAB.com



MODEL

Model	GPM	PSI	Engine*	CC's	Burner	BTU/HR	Pump	Drive	Hose
1075BE	4.0	3500	Honda	389	12V DC	385,800	HM4035L.2	Belt	100'-3/8"

10' TRAILER

- Enclosed Side Door
- Rear Barn Doors
- 2-5/16" Ball Hitch
- Undercarriage insulated with 1-1/2" Urethane Foam
- Interior insulated and covered in white metal cladding
- Electric Brakes
- 3500 GVW Single Axle
- HD Hose Reel, Steel Construction, 3500 PSI, 200' Capacity
- Anti Freeze Tank



WATER TANK

- Heavy-Duty One-Piece Seamless Polyethylene
- Won't Crack, Rust or Corrode
- LT220 • 220-gallon capacity • 31" wide x 58" long x 39" high

OPTIONS

- Steam Kit, 100' 3/8" Hose & Wand
- Electric Heater, 1500 Watt, 115 Volt

EDMONTON, AB

16712 - 118 Ave.
Edmonton, AB
Phone: 780-451-4521
Toll Free: 800-328-1555

CALGARY, AB

3611 - 60 Ave. SE
Calgary, AB
Phone: 403-717-4280
Toll Free: 800-717-8101

RED DEER, AB

#8, 7419 - 50th (Gaetz) Ave.
Red Deer, AB
Phone: 403-309-2271
Toll Free: 877-468-7973

LETHBRIDGE, AB

Bay 1, 4002 - 9 Ave. N
Lethbridge, AB
Phone: 403-381-3318
Toll Free: 877-303-3394

GRANDE PRAIRIE, AB

Unit 109, 10101-118 St.
Grande Prairie, AB
Phone: 780-538-2556
Toll Free: 800-320-8848

LANGLEY, BC

#112 - 20575 Langley By-Pass
Langley, BC
Phone: 604-532-7002
Toll Free: 888-532-7021

ESTEVAN, SK

1112 - 5th Street
Estevan, SK
Phone: 306-634-8727
Toll Free: 855-634-8727

BISMARCK, ND

2805 Morrison Ave., Suite C
Bismarck, ND
Phone: 701-222-3941
Toll Free: 800-279-0172

WILLISTON, ND

406 - 8th Avenue E.
Williston, ND
Phone: 701-609-5494
Toll Free: 877-803-3913



Pressure Washers

www.HotsyAB.com



MODELS

Model	GPM	PSI	Engine	CC's (HP)	Burner	BTU/HR	Pump Model	Drive	Hose
1260SS	4.5	3000	Vanguard	570 (16)	12V DC	385,800	HM4035R.3	Belt	100'-3/8"
1270SS	4.5	4000	Honda	688 (20)	12V DC	385,800	HX5843R.2	Belt	100'-3/8"

SKID

- Heavy-duty Steel Welded Construction
- Forklift Lifting, Top Lifting
- Custom Built
- 7'w x 58" h x 9' long
- HD Hose Reel, Steel Construction, 3500 PSI, 200' Capacity
- Anti Freeze Tank

WATER TANK

- Heavy-Duty One-Piece Seamless Polyethylene
- Won't Crack, Rust or Corrode
- LT600 • 600-gallon capacity • 44" wide x 73" long x 60" high

OPTIONS

- Steam Kit, 100' 3/8" Hose & Wand



EDMONTON, AB

16712 - 118 Ave.
Edmonton, AB
Phone: 780-451-4521
Toll Free: 800-328-1555

CALGARY, AB

3611 - 60 Ave. SE
Calgary, AB
Phone: 403-717-4280
Toll Free: 800-717-8101

RED DEER, AB

#8, 7419 - 50th (Gaetz) Ave.
Red Deer, AB
Phone: 403-309-2271
Toll Free: 877-468-7973

LETHBRIDGE, AB

Bay 1, 4002 - 9 Ave. N
Lethbridge, AB
Phone: 403-381-3318
Toll Free: 877-303-3394

GRANDE PRAIRIE, AB

Unit 109, 10101-118 St.
Grande Prairie, AB
Phone: 780-538-2556
Toll Free: 800-320-8848

LANGLEY, BC

#112 - 20575 Langley By-Pass
Langley, BC
Phone: 604-532-7002
Toll Free: 888-532-7021

ESTEVAN, SK

1112 - 5th Street
Estevan, SK
Phone: 306-634-8727
Toll Free: 855-634-8727

BISMARCK, ND

2805 Morrison Ave., Suite C
Bismarck, ND
Phone: 701-222-3941
Toll Free: 800-279-0172

WILLISTON, ND

406 - 8th Avenue E.
Williston, ND
Phone: 701-609-5494
Toll Free: 877-803-3913



Pressure Washers

www.HotsyAB.com



MODELS

Model	GPM	PSI	Engine	CC's (HP)	Burner	BTU/HR	Pump Model	Drive	Portability	Ship Wt (lbs)
965B*	3.0	3000	Honda	270 (9)	12V DC	248,500	HD3030L.1	Belt	Optional	570
1075BE**	4.0	3500	Honda	389 (13)	12V DC	385,800	HM4035L.2	Belt	Optional	625
1080BE**	4.6	3500	Vanguard	570 (16)	12V DC	385,800	HM4035L.2	Belt	Optional	665

* Battery not required ** 12V battery required, but not supplied E = electric B = Belt Drive

SKID

- Heavy-duty Steel Welded Construction
- Forklift Lifting, Top Lifting
- Custom Built
- 30" w x 58" h x 8' long
- HD Hose Reel, Steel Construction, 3500 PSI, 150' Capacity



WATER TANK

- Heavy-Duty One-Piece Seamless Polyethylene
- Won't Crack, Rust or Corrode
- LT220
 - 220-gallon capacity
 - 31" wide x 58" long x 39" high

OPTIONS

- Steam Kit, 100' 3/8" Hose & Wand

EDMONTON, AB

16712 - 118 Ave.
Edmonton, AB
Phone: 780-451-4521
Toll Free: 800-328-1555

CALGARY, AB

3611 - 60 Ave. SE
Calgary, AB
Phone: 403-717-4280
Toll Free: 800-717-8101

RED DEER, AB

#8, 7419 - 50th (Gaetz) Ave.
Red Deer, AB
Phone: 403-309-2271
Toll Free: 877-468-7973

LETHBRIDGE, AB

Bay 1, 4002 - 9 Ave. N
Lethbridge, AB
Phone: 403-381-3318
Toll Free: 877-303-3394

GRANDE PRAIRIE, AB

Unit 109, 10101 - 118 St.
Grande Prairie, AB
Phone: 780-538-2556
Toll Free: 800-320-8848

LANGLEY, BC

#112 - 20575 Langley By-Pass
Langley, BC
Phone: 604-532-7002
Toll Free: 888-532-7021

ESTEVAN, SK

1112 - 5th Street
Estevan, SK
Phone: 306-634-8727
Toll Free: 855-634-8727

BISMARCK, ND

2805 Morrison Ave., Suite C
Bismarck, ND
Phone: 701-222-3941
Toll Free: 800-279-0172

WILLISTON, ND

406 - 8th Avenue E.
Williston, ND
Phone: 701-609-5494
Toll Free: 877-803-3913



Pressure Washers

www.HotsyAB.com



MODEL - COLD WATER

Model	GPM	PSI	Engine	HP	Pump	Drive	Hose
WB2004GE	4	2000	Honda	13	Honda/HC235	Direct	100' 3/8"

SKID

- Heavy-duty Steel Welded Construction
- Forklift Lifting
- Custom Built
- 34" w x 45" h x 78" long
- HD Hose Reel, Steel Construction, 3500 PSI, 200' Capacity
- 50' 3/8" Hose & Wand

WATER TANK

- Heavy-Duty One-Piece Seamless Polyethylene
- Won't Crack, Rust or Corrode
- LT220 • 220-gallon capacity • 31" wide x 58" long x 39" high



EDMONTON, AB

16712 - 118 Ave.
Edmonton, AB
Phone: 780-451-4521
Toll Free: 800-328-1555

CALGARY, AB

3611 - 60 Ave. SE
Calgary, AB
Phone: 403-717-4280
Toll Free: 800-717-8101

RED DEER, AB

#8, 7419 - 50th (Gaetz) Ave.
Red Deer, AB
Phone: 403-309-2271
Toll Free: 877-468-7973

LETHBRIDGE, AB

Bay 1, 4002 - 9 Ave. N
Lethbridge, AB
Phone: 403-381-3318
Toll Free: 877-303-3394

GRANDE PRAIRIE, AB

Unit 109, 10101 - 118 St.
Grande Prairie, AB
Phone: 780-538-2556
Toll Free: 800-320-8848

LANGLEY, BC

#112 - 20575 Langley By-Pass
Langley, BC
Phone: 604-532-7002
Toll Free: 888-532-7021

ESTEVAN, SK

1112 - 5th Street
Estevan, SK
Phone: 306-634-8727
Toll Free: 855-634-8727

BISMARCK, ND

2805 Morrison Ave., Suite C
Bismarck, ND
Phone: 701-222-3941
Toll Free: 800-279-0172

WILLISTON, ND

406 - 8th Avenue E.
Williston, ND
Phone: 701-609-5494
Toll Free: 877-803-3913



Pressure Washers

www.HotsyAB.com



MODELS

Model	GPM	PSI	Engine*	CC's	Burner	BTU/HR	Pump Model	Drive	Hose	Ship Wt (lbs)
5645**	6.0	3000	Honda	670	120V AC	740,000	HHC800.1	Belt	150'-3/8"	1110
HSS-503069E	5.0	3000	Kubota	599	12V DC	429,000	HX5843R.2	Belt	150'-3/8"	1305
HSS-653569E	6.5	3500	Kubota	1123	12V DC	557,000	HX8043R.2	Belt	150'-3/8"	1710
HSS-803069E	8.0	3000	Kubota	1123	12V DC	772,000	HX9536.2	Belt	150'-1/2"	1715
HSS-952569E	9.5	2500	Kubota	1123	12V DC	857,000	HX1036R.2	Belt	150'-1/2"	1715

* Honda: Gas-Powered Engine * Lombardini: Diesel-Powered Engine ** Models include a 2000W Generator

VAN BODY

- 18 - 20 - 22 foot
- 6'6" high
- 8' inside width
- Steam Kit, 150' 3/8" Hose & Wand
- 2' x 6' Spruce Floor, Painted Kemlite
- Drop Side Door
- Rear Barn Door
- Work Lights
- HD Hose Reel, Steel Construction, 3500 PSI, 200' Capacity
- Interior Walls and Ceiling Insulated
- Interior Aluminum Paneling
- Undercarriage Insulated with 1-1/2" Urethane Foam

WATER TANK

- Heavy-Duty One-Piece Seamless Polyethylene
- Won't Crack, Rust or Corrode
- 2 - LT600
- 600-gallon capacity each
- Steel Frame Work
- 44" wide x 73" long x 60" high
- 2 - LT630
- 630-gallon capacity each
- Steel Frame Work
- 48" wide x 71" long x 60" high
- 3 - LT330
- 330-gallon capacity each
- Steel Frame Work
- 29" wide x 62" long x 67" high

OPTIONS

- Dry Steam Kit, 100' 3/4" Hose, Hose Hanger, Wand
- Pre-Spray
- Bus Heater
- Electric Heater



EDMONTON, AB

16712 - 118 Ave.
Edmonton, AB
Phone: 780-451-4521
Toll Free: 800-328-1555

CALGARY, AB

3611 - 60 Ave. SE
Calgary, AB
Phone: 403-717-4280
Toll Free: 800-717-8101

RED DEER, AB

#8, 7419 - 50th (Gaetz) Ave.
Red Deer, AB
Phone: 403-309-2271
Toll Free: 877-468-7973

LETHBRIDGE, AB

Bay 1, 4002 - 9 Ave. N
Lethbridge, AB
Phone: 403-381-3318
Toll Free: 877-303-3394

GRANDE PRAIRIE, AB

Unit 109, 10101 - 118 St.
Grande Prairie, AB
Phone: 780-538-2556
Toll Free: 800-320-8848

LANGLEY, BC

#112 - 20575 Langley By-Pass
Langley, BC
Phone: 604-532-7002
Toll Free: 888-532-7021

ESTEVAN, SK

1112 - 5th Street
Estevan, SK
Phone: 306-634-8727
Toll Free: 855-634-8727

BISMARCK, ND

2805 Morrison Ave., Suite C
Bismarck, ND
Phone: 701-222-3941
Toll Free: 800-279-0172

WILLISTON, ND

406 - 8th Avenue E.
Williston, ND
Phone: 701-609-5494
Toll Free: 877-803-3913



Pressure Washers

www.HotsyAB.com



HYDRAULIC DRIVE SYSTEMS

Model	GPM	PSI	Drive	Burner	BTU/HR	Pump
WB3007HYD	10.0	3000	Hydraulic	120V AC	980,000	HOTSYHC950
WB30072HYD	2 x 10.0	3000	Hydraulic	120V AC	980,000	2 x HOTSYHC950

VAN BODY

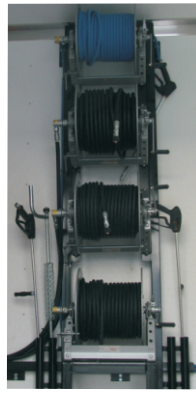
- 18 - 20 - 22 foot
- 6'6" high
- 8' inside width
- Steam Kit, 150' 3/8" Hose & Wand
- 2' x 6' Spruce Floor, Painted Kemlite
- Drop Side Door
- Rear Barn Door
- Work Lights
- HD Hose Reel, Steel Construction, 3500 PSI, 200' Capacity
- Interior Walls and Ceiling Insulated
- Undercarriage Insulated with 1-1/2" Urethane Foam
- Interior Aluminum Paneling

WATER TANK

- Heavy-Duty One-Piece Seamless Polyethylene
- Won't Crack, Rust or Corrode
- 2 - LT600
- 600-gallon capacity each
- Steel Frame Work
- 44" wide x 73" long x 60" high
- 2 - LT630
- 630-gallon capacity each
- Steel Frame Work
- 48" wide x 71" long x 60" high
- 3 - LT330
- 330-gallon capacity each
- Steel Frame Work
- 29" wide x 62" long x 67" high

OPTIONS

- Dry Steam Kit, 100' 3/4" Hose, Hose Hanger, Wand
- Pre-Spray
- Bus Heater
- Electric Heater
- Roper Loading Pump



EDMONTON, AB

16712 - 118 Ave.
Edmonton, AB
Phone: 780-451-4521
Toll Free: 800-328-1555

CALGARY, AB

3611 - 60 Ave. SE
Calgary, AB
Phone: 403-717-4280
Toll Free: 800-717-8101

RED DEER, AB

#8, 7419 - 50th (Gaetz) Ave.
Red Deer, AB
Phone: 403-309-2271
Toll Free: 877-468-7973

LETHBRIDGE, AB

Bay 1, 4002 - 9 Ave. N
Lethbridge, AB
Phone: 403-381-3318
Toll Free: 877-303-3394

GRANDE PRAIRIE, AB

Unit 109, 10101 - 118 St.
Grande Prairie, AB
Phone: 780-538-2556
Toll Free: 800-320-8848

LANGLEY, BC

#112 - 20575 Langley By-Pass
Langley, BC
Phone: 604-532-7002
Toll Free: 888-532-7021

ESTEVAN, SK

1112 - 5th Street
Estevan, SK
Phone: 306-634-8727
Toll Free: 855-634-8727

BISMARCK, ND

2805 Morrison Ave., Suite C
Bismarck, ND
Phone: 701-222-3941
Toll Free: 800-279-0172

WILLISTON, ND

406 - 8th Avenue E.
Williston, ND
Phone: 701-609-5494
Toll Free: 877-803-3913



Pressure Washers

www.HotsyAB.com



DIESEL ENGINE SYSTEMS

Model	GPM	PSI	Engine	Drive	Burner	BTU/HR	Pump
WB3007SDH	7.0	3000	Isuzu Diesel	Belt	120V AC	980,000	HOTSYHC800

VAN BODY

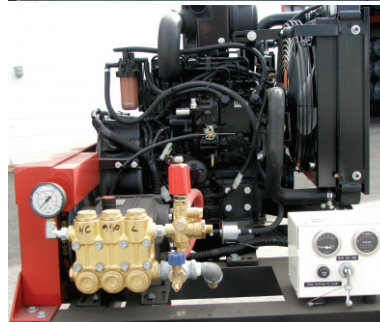
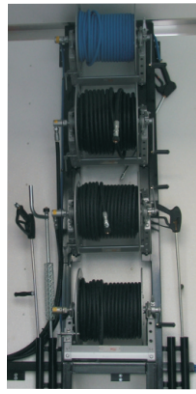
- 18 - 20 - 22 foot
- 6'6" high
- 8' inside width
- Steam Kit, 150' 3/8" Hose & Wand
- 2' x 6' Spruce Floor, Painted Kemlite
- Drop Side Door
- Rear Barn Door
- Work Lights
- HD Hose Reel, Steel Construction, 3500 PSI, 200' Capacity
- Interior Walls and Ceiling Insulated
- Undercarriage Insulated with 1-1/2" Urethane Foam
- Interior Aluminum Paneling

WATER TANK

- Heavy-Duty One-Piece Seamless Polyethylene
- Won't Crack, Rust or Corrode
- 2 - LT600
- 600-gallon capacity each
- Steel Frame Work
- 44" wide x 73" long x 60" high
- 2 - LT630
- 630-gallon capacity each
- Steel Frame Work
- 48" wide x 71" long x 60" high
- 3 - LT330
- 330-gallon capacity each
- Steel Frame Work
- 29" wide x 62" long x 67" high

OPTIONS

- Dry Steam Kit, 100' 3/4" Hose, Hose Hanger, Wand
- Pre-Spray
- Bus Heater
- Electric Heater
- Roper Loading Pump



EDMONTON, AB

16712 - 118 Ave.
Edmonton, AB
Phone: 780-451-4521
Toll Free: 800-328-1555

CALGARY, AB

3611 - 60 Ave. SE
Calgary, AB
Phone: 403-717-4280
Toll Free: 800-717-8101

RED DEER, AB

#8, 7419 - 50th (Gaetz) Ave.
Red Deer, AB
Phone: 403-309-2271
Toll Free: 877-468-7973

LETHBRIDGE, AB

Bay 1, 4002 - 9 Ave. N
Lethbridge, AB
Phone: 403-381-3318
Toll Free: 877-303-3394

GRANDE PRAIRIE, AB

Unit 109, 10101 - 118 St.
Grande Prairie, AB
Phone: 780-538-2556
Toll Free: 800-320-8848

LANGLEY, BC

#112 - 20575 Langley By-Pass
Langley, BC
Phone: 604-532-7002
Toll Free: 888-532-7021

ESTEVAN, SK

1112 - 5th Street
Estevan, SK
Phone: 306-634-8727
Toll Free: 855-634-8727

BISMARCK, ND

2805 Morrison Ave., Suite C
Bismarck, ND
Phone: 701-222-3941
Toll Free: 800-279-0172

WILLISTON, ND

406 - 8th Avenue E.
Williston, ND
Phone: 701-609-5494
Toll Free: 877-803-3913

Pressure Washers

www.HotsyAB.com



Visit HotsyAB.com to:

- Watch our Videos • Download our Parts & Accessories Catalogue • View our most recent flyer
- Learn the "9 Things to Know Before Buying a Pressure Washer"

EDMONTON, AB 16712 - 118 Ave. Edmonton, AB
Phone: 780-451-4521 Toll Free: 800-328-1555
CALGARY, AB 3611 - 60 Ave. SE Calgary, AB
Phone: 403-717-4280 Toll Free: 800-717-8101
RED DEER, AB #8, 7419 - 50th (Gaetz) Ave. Red Deer, AB
Phone: 403-309-2271 Toll Free: 877-468-7973
LETHBRIDGE, AB Bay 1, 4002 - 9 Ave. N Lethbridge, AB
Phone: 403-381-3318 Toll Free: 877-303-3394
GRANDE PRAIRIE, AB Unit 109, 10101-118 St. Grande Prairie, AB
Phone: 780-538-2556 Toll Free: 800-320-8848
LANGLEY, BC #112 - 20575 Langley By-Pass Langley, BC
Phone: 604-532-7002 Toll Free: 888-532-7021
ESTEVAN, SK 1112 - 5th Street Estevan, SK
Phone: 306-634-8727 Toll Free: 855-634-8727
BISMARCK, ND 2805 Morrison Ave., Suite C Bismarck, ND
Phone: 701-222-3941 Toll Free: 800-279-0172
WILLISTON, ND 406 - 8th Avenue E. Williston, ND
Phone: 701-609-5494 Toll Free: 877-803-3913